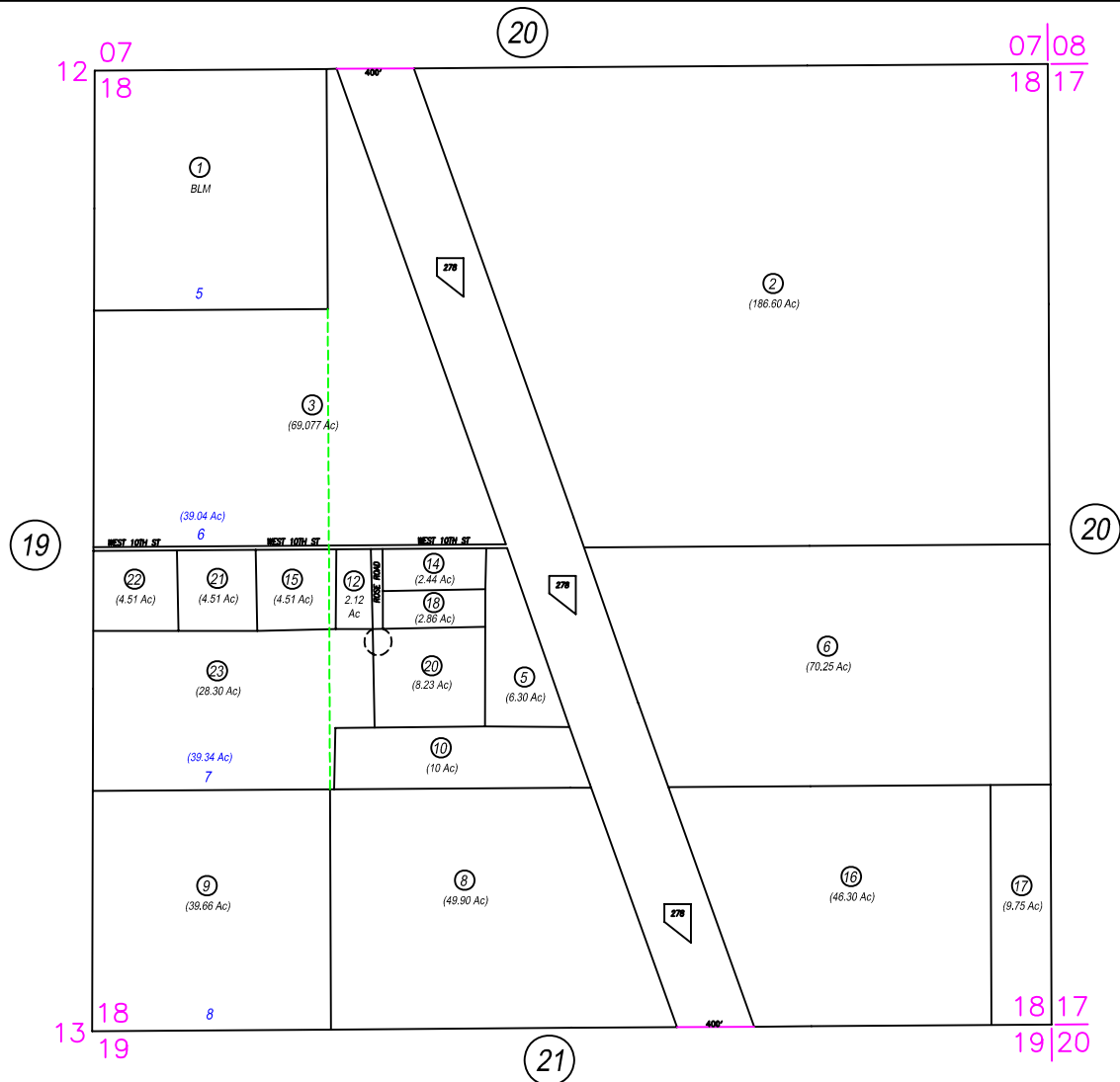


Sec. 18, T21N, R53E

07-40



*NOTE: This plat is for assessment purposes only and does not represent a survey. No liability is assumed as to the accuracy of the data delineated hereon. Use of this plat for other than assessment purposes is forbidden unless approved by the Eureka County Assessor's Office.*

DIAMOND VALLEY

EUREKA COUNTY

EUCDAS/JAN 2000/11H

SCALED 1"=700'

REV/EUCDAS/JAN 2001/11H

